



QUEBEC ASSOCIATION OF EDUCATORS

Association des Édicateurs et des Édicateurices du Québec

PRINTEMPS 2006  SPRING EDITION

IN THIS ISSUE

President's Message.....2
 Research Notes.....3
 B.Y.F.C. Accreditation.....4
 CCC/QAE Conference.....5
 PQJ = EQUIP Program.....6
 Board Members.....7
 Educator Awards.....8
 Educator Awards Nomination.....9
 Membership Recruitment.....10

Q.A.E. BOARD

President.....Phillip Alleyne
 Vice President.....Eastlyn Flemming
 Secretary..... Anna Virgini
 Treasurer.....Sandy Parkes
 Board Members Varda Mann-Feder
 Robert Calame
 Sam Barile
 Sherwin Laptiste
 Executive Director.....Tony Maciocia

Layout & design of Newsletters
 by Sue Plaisance




CONTACT INFO

Mailing Address:

Quebec Association of Educators
 6 Weredale Park
 Montreal, Quebec
 H3Z 1Y6

Phone: (514) 932-7161 ex 407
 Fax: (514) 932-5036
 e-mail: Tony_Maciocia@sss.gouv.qc.ca
 website : www.evccanada.ca
 conference: www.icycc2006.com

ORGANIZATIONAL MEMBERS

-  Batshaw Youth and Family Centres
-  Bartimeaus Inc. (Quebec)
-  Concordia University

INTERNATIONAL CONFERENCE PROGRAM

Now on-line

The International Child and Youth Care conference's detailed program is now available on line!!

With over 120 workshops, keynote speakers, 50 plus poster sessions, and a variety of pre-conference activities, *this is the conference you want to attend!!*

Visit the website at:

WWW.ICYCC2006.COM

LE PROGRAMME DU CONGRÈS CONJOINT INTERNATIONAL

Maintenant en ligne

Le programme du congrès est maintenant en ligne.

Avec plus de 120 ateliers, des conférenciers d'honneur, plus de 50 présentation par affiches et une gamme d'activités pré-conférence, *voici un congrès auquel vous devez assister!!*

Visitez le site internet :



17-20 octobre
 2006 October
 Palais des Congrès Montréal
 Québec, Canada
www.icycc2006.com

Organisé par / Co-Sponsored by



The Quebec Association of Educators is a Founding member of (CCCYCA) Council of Canadian Child, and Youth Care Associations and the ACYCP (Association of Child and Youth Care Practice)

PRESIDENT'S MESSAGE



It is the spring of 2006, a time when nature washes away the old and brings in the new life. We see it in the grass and trees and feel it in the air and sun.

The Quebec Association of Educators (QAE) has been hard at work during the winter and with the arrival of spring, we can see the fruits of our labor as all aspects of the International Conference 2006 come together. We are excited about this conference, it is my hope that you share the same excitement as your association stands proud in this new partnership of bringing the world to Montreal for four days to look “Beyond Borders” in the field of Child and Youth Care.

Please stay informed regarding the conference via the website www.icycc2006.com

On behalf of the QAE let me take the opportunity to welcome our new members, our executive board meets on the third Thursday of the month at the 6 Weredale building starting at 5:00 pm. All QAE members and potentially new interested individuals are welcome to join us. We invite you to bring your comments, ideas and suggestions to this forum as we work towards the fullest potential of the Association.

Did you know that as a member of the QAE you are also a member of the Council of Canadian Child and Youth Care Association's? **CCCYCA**. Check out their website by clicking on their logo on the International conference website.

Our annual joint Conference with the Council for Clients and Community (CCC) will be held on Thursday May 11, 2006. This is a partnership tradition that can only enhance communication and understanding. Join us for that day of learning and a great BBQ lunch.

Regards,
Phillip Alleyne,
President

RESEARCH NOTES

Compiled from the *Journal of Child and Youth Care Work*
by Varda Mann-Feder, Chair, Research Committee, QAE



A recent study from Ohio examined the impact of involvement in a range of community programs on high risk behaviors of young people. Youth involved in Big Brothers/Big Sisters, Boys and Girls Clubs, after school programs and community centers were surveyed. The study concluded that the most important protective factor in relation to the recurrence of problem behavior was the opportunity to develop a sense of

belonging. Interestingly, this had little to do with attendance alone, and the authors point out that simply encouraging youth to show up has little to do with their level of participation or connection to the program. The authors recommend that staff pay careful attention to creating activities that build belonging or identification with the program.

A research team from University of Victoria recently surveyed the literature on families of children with chronic illness. They concluded that, despite a lack of relevant research, siblings of chronically ill youth are often overlooked despite their exposure to chronic stress.

The authors challenged child and youth care professionals to become aware of the needs of this high risk group.

A recent study from Wisconsin documented interviews with experienced child and youth care workers in order to identify factors that help them to find meaning in their work. The study concluded that a sense of ownership is critical for workers. By ownership, the author was referring to a perception that the worker themselves feel highly responsible for making the program in which they work effective. Interestingly, the author pointed out that this could happen even if the worker did not feel that the broader organization was supportive, although clearly ownership is enhanced in situations in which workers judge that their organization is supportive and in agreement with the general program direction. Organizational support did enhance worker perceptions of their degree of success with youth.

CELEBRATING CHILD & YOUTH CARE WORKERS (EDUCATORS) WEEK

The first week in May is **International Child and Youth Care Week**. This is a time to recognize the work done by child and youth care workers around the world.

In Canada, there are an estimated 30,000 child and youth care workers*. These professionals work with the most vulnerable children and youth in our society – those who have been neglected, abandoned, abused, traumatized, or who suffer from such syndromes as Fetal Alcohol Spectrum Disorder. They also work with the families.

Child and youth care workers can be found in a variety of settings, such as community mental health, outreach, group homes, residential treatment, school, hospitals, family support, and juvenile justice programs. They specialize in the development and implementation of therapeutic programs and planned environments, and they are trained to use everyday life events to facilitate change. The primary focus of child and youth care workers is on the establishment of trust and the development of therapeutic relationships.

Child and youth care workers are most often seen on the front-line. Their jobs can be challenging and demanding, requiring a significant commitment to the young people and families with whom they are engaged. They go about their business quietly, without fanfare or public recognition, yet the work they are doing has the potential to transform lives (and often does).

Child and youth care workers are one of the nation's best kept secrets. In recognition of International Child and Youth Care Week, it's time to let the secret out. Congratulations to all child and youth care workers, everywhere, for helping to make the world a better place.

Heather Modlin
President

Council of Canadian Child and Youth Care Associations

*Child and Youth Workers in Quebec are also referred to as Educators (Educatuers).





Les centres de la jeunesse et de la famille **BATSHAW** **BATSHAW Youth and Family Centres**

ACCREDITATIONS: A PARTICIPANTS GUIDE

Accreditation is a process of structured self-evaluation which will help Batshaw identify its strengths and weaknesses. It is a tool for organizational and service improvement, and legal requirement of the Québec Ministry of Health and Social Services. All institutions must complete the process by December 2008.

Last year we explored the implications. First we chose an accrediting body. The Batshaw Management Committee reviewed the choices and recommended to the board the accreditation process of the Conseil québécois d'agrément (CQA) because:

- ❖ The process is rigorous and allow us to compare ourselves to other youth centres;
- ❖ It calls for significant input from clients, foster parents, staff and partners;
- ❖ The outcome is a three-year Improvement Plan based on three inputs;
- ❖ CQA accreditation has credibility in the eyes of the Ministry.

The Board approved this choice in June 2005. CQA has named an advisor to work with us in the planning of our process which begins March 6, 2006 and ends on September 28, 2007. Sufficient budget has been set aside to support the process.

AGRÉMENT: GUIDE DU PARTICIPANT

L'agrément est un processus d'auto-évaluation qui nous aidera à déterminer nos forces et nos faiblesses. Cet outil permet aux établissements d'améliorer la qualité de leurs services et de leur organisation et constitue en outre une exigence législative du ministère de la Santé et des Services sociaux du Québec. Tous les établissements doivent se soumettre au processus d'ici décembre 2008.

L'an dernier, nous avons pris connaissance de cette démarche et arrêté notre choix sur un organisme d'agrément. Le Comité de direction des Centres Batshaw a examiné les options proposées et recommandée au Conseil d'administration (CA) le processus d'agrément du Conseil québécois d'agrément (CQA) pour les raisons suivantes :

- ❖ Le processus est rigoureux et nous permet de nous comparer à d'autres centres jeunesse;
- ❖ Il fait appel à la participation des clients, des familles d'accueil, du personnel et des partenaires;
- ❖ Le plan d'amélioration, élaboré à partir de la rétroaction de ces groupes, constitue l'aboutissement de ce processus ;
- ❖ L'agrément du CQA est reconnue par le ministère.

Le CA a approuvé ce choix en juin 2005. Le CQA a désigné un conseiller qui nous guidera dans la planification du processus qui commencera le 6 mars 2006, pour se terminer le 28 septembre 2007. Un budget suffisant a été alloué pour couvrir les frais associés à ce processus.

CONFÉRENCE DU CCC ET DE L'AEQ

UNE PRÉPARATION ADÉQUATE =
UN PASSAGE À L'ÂGE ADULTE SIMPLIFIÉ

Le jeudi 11 mai 2006

De 9 h À 15 h

Centres de la Jeunesse et de la Famille Batshaw

6, rue Weredale Park

Jeunes, parents, familles d'accueil, éducateurs,
travailleurs sociaux, et le communautaire,

Prenez note de la date

Détails à venir



CCC/QAE CONFERENCE

LIFE SKILL DEVELOPMENT= SMOOTHER TRANSITIONING TO
ADULTHOOD

Thursday May 11, 2006

From : 9 am to 3 pm

Batshaw Youth and Family Centres

6 Weredale Park

Youth, Parents, Foster Parents, Educators,
Social Workers, Community Organizations,

Mark the date

Details coming soon



DPJ

Québec aidera les jeunes de 18 ans laissés à eux-mêmes

Le gouvernement du Québec espère régler une partie du problème des jeunes qui ont été confiés à la DPJ et qui se retrouvent laissés à eux-mêmes lorsqu'ils atteignent l'âge de 18 ans.

Plusieurs n'ont plus de famille et sombrent dans la pauvreté et le crime.

Certains jeunes qui vivent dans la rue n'ont jamais eu l'aide qu'ils auraient souhaitée et sont devenus mendiants.

Habituellement, lorsqu'ils ont 18 ans, la DPJ n'a plus à s'occuper des jeunes qu'elle hébergeait et ces derniers n'ont aucune place où aller.

«Le jeune partait avec des sacs à poubelle parce qu'on n'avait pas de boîtes à lui fournir. Donc, il mettait tous ses effets personnels et il était là, au bout de la passerelle, à attendre que quelqu'un vienne le chercher», raconte Robert Delorme, éducateur au centre jeunesse Laval.

<http://lcn.canoe.com/lcn/infos/national/archives/2006/04/20060407-1901030.html>

C'est justement pour éviter cela et pour les aider à se trouver un emploi ou à poursuivre leurs études, que le gouvernement lance le programme «Qualification des jeunes».

Le centre jeunesse leur trouve aussi un appartement. Ils apprennent à devenir autonomes après avoir passé plusieurs années en institution, où les éducateurs décidaient tout pour eux.

Anna a 19 ans et elle a passé six ans dans les centres jeunesse. Son père l'a battue et agressée.

«Quand j'avais huit ans, neuf ans, il a commencé à me toucher sexuellement», raconte-t-elle. Il l'a violée à 12 ans et elle est devenue enceinte.

Grâce au programme qui a tout d'abord été un projet pilote à Laval, elle réapprend à vivre. Elle effectue un stage au gouvernement et veut poursuivre ses études.

Au Québec, 500 jeunes, les plus marqués, devraient profiter du programme.

En vidéo, écoutez le reportage d'Harold Gagné.

PQJ = EQUIP PROGRAM

For more information regarding this program, please contact Danny Hoelscher at 932-7161 ext.395

ASSOCIATION DES ÉDUCATEURS ET DES ÉDUCATRICES DU QUÉBEC
QUEBEC ASSOCIATION OF EDUCATORS



BOARD MEMBERS FOR 2005/2006

PHILIP ALLEYNE, President
philip_alleyne@ssss.gouv.qc.ca

EASTLYN FLEMMING, Vice President

SANDY PARKES, Treasurer
sandy_parkes@ssss.gouv.qc.ca

ANNA VIRGINI, Secretary

TONY MACIOCIA, Executive Director
tony_maciocia@ssss.gouv.qc.ca

DR. VARDA MANN-FEDER, Board Member

ROBERT CALAME, Board Member
robert_calame@ssss.gouv.qc.ca

SHERWIN LAPTISTE, Board Member
sherwin_laptiste@ssss.gouv.qc.ca

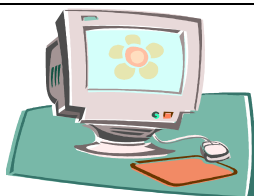
SAM BARILE, Board Member
sam_barile@ssss.gouv.qc.ca



SCHEDULE OF UPCOMING Q.A.E. MEETINGS

May 26th June 16th

NOTE: ALL MEETINGS ARE HELD AT 6 WEREDALE PARK FROM 5:00 TO 7:00 P.M.



Visit our QAE webpage by going to www.cyccanada.ca

You will then find on the left side of the home page, a blue box with QAE indicated... simply double click to visit the site.



New Organizational member joins Q.A.E.!

Special thanks to BARTIMAEUS Quebec Inc., Doug Brice/Denis Farley, Directors
www.bartimaeus.com

ASSOCIATION DES ÉDUCATEURS ET DES ÉDUCATRICES DU QUÉBEC
QUEBEC ASSOCIATION OF EDUCATORS



EDUCATOR AWARDS
EXCELLENCE IN PRACTICE AND COMMITMENT TO THE FIELD

Introduction

In an effort to recognize the Educators valuable contribution to their practice and to their profession, the Q.A.E. has established an Annual Awards Program. There will be three categories of awards every year:

- ◆ **Student award**, will be directed to a student who is in their graduating year and is demonstrating good academic, outstanding stage placement and who has received a strong letter of recommendation from their school and stage placement setting.
- ◆ **Educator award**, is designated to practicing “Educators” in the field. The educator in this category must demonstrate overall commitment to their professional development and the profession. This includes all educators working across the “Life Span”.
- ◆ **Field award**, is designated to someone who is continuing to make a significant contribution to the field and is supportive of the Q.A.E. objectives.
- ◆ **The awards will be presented at the International Conference on Thursday, October 19, 2006**

AWARDS INCLUDE

- **Student Award:** Plaque + complimentary membership for one year + \$125.00.
- **Educator Award:** (2 awards) Plaque + \$150.00. (With possibility of matching employer contribution)
- **Field Award:** Plaque

General Criteria:

1. All nominees **MUST** be members in good standing with the Q.A.E.
2. Nominees must have demonstrated a commitment to the field (pursuit for professional growth, years of practice, etc...).
3. Nominations should include Nominee’s name, organization affiliated with, address of organization, nominees phone number and address (see form enclosed).
4. A short narrative must be submitted that describes why the nominee should be considered for the award. What are the attributes and competencies that make this person excel in their practice, etc...
5. Members the Selection Committee are not eligible for the above awards.
6. Nominees will be reviewed on the basis of their contribution to the field. A “Blind-Review” process will be conducted.

Selection Committee:

QAE Director
President of Q.A.E. (ex-officio)
One representative from academia
One employer representative
One representative from the community (i.e., Client advocacy group, etc...)

MAILING ADDRESS: Q.A.E. C/O TONY MACIOCIA, 6 WEREDALE PARK, WESTMOUNT, QUEBEC, H3Z 1Y6
For more information call Tony at 932-7161 ext. 407 or e-mail: Tony_Maciocia@ssss.gouv.qc

ASSOCIATION DES ÉDUCATEURS ET DES ÉDUCATRICES DU QUÉBEC
QUEBEC ASSOCIATION OF EDUCATORS



EDUCATOR AWARDS
EXCELLENCE IN PRACTICE AND COMMITMENT TO THE FIELD

NOMINEE FORM
Q.A.E. AWARDS PROGRAM

DATE: _____

NAME OF PERSON NOMINATING: _____

ORGANIZATION/AFFILIATION: _____

ADDRESS: _____

TELEPHONE: (WORK) _____
(HOME) _____

AWARD CATEGORY (*Select one category*)

STUDENT

EDUCATOR

FIELD

NAME OF PERSON BEING NOMINATED: _____

YEARS IN THE FIELD: _____

NUMBER OF YEARS WITH THE QUEBEC ASSOCIATION OF EDUCATORS: _____

Provide a description why this person is being nominated. Identify how the nominee has demonstrated their commitment to their practice. *Please note that your description should be between 150 to 200 words, typed, double spaced and attached to this form.*

Other relevant information to support nomination, e.g.: specific projects, initiatives, achievements, etc...).

PROPOSED BY: _____
(Signature)

_____ (Telephone number)

Note: Remember, the nominee must be a member of the Q.A.E. at least 30 days prior to the deadline at the time of submitting this form.

Please submit prior to September 5, 2006 at 5:00 p.m. to the

Q.A.E., c/o Tony Maciocia,
6 Weredale Park
Wesmount, Quebec H3Z 1Y6
or fax to: (514) 932-7161 ext. 407
e-mail: Tony_Maciocia@ssss.gouv.qc

MEMBERSHIP RECRUITMENT

If you are in the field of child/youth care or life span care, as an Educator, Supervisor, Researcher, Trainer, Director, Administrator, then you need to join the growing numbers of professionals that are promoting the field of child and youth/life-span care.

Joining the Q.A.E. is one concrete way to demonstrate your commitment towards the further development and promotion of Educators and their profession.

There are three categories of membership (full members, associate and student membership)

You can get applications to join the Q.A.E. by approaching the following people or selected locations:

BATSHAW RECEPTION DESKS AT:

*Dorval (514) 636-0910
Prévost (514) 932-7722
6 Weredale (514) 932-7161*

➤ Concordia University: Dr. Varda Mann-Feder
(514) 848-2266

➤ Teen Haven: Clement Walker (514) 769-5050

➤ Douglas Hospital: Eastlyn Flemming or Rick Smith
(514) 761-6131 (Lyall Pavilion)

You can also ask any of the Q.A.E. Board Members listed in the front of the Newsletter

Also: go to www.cyccanada.ca

**Any other enquiries can also be directed to:
Tony_Maciocia@ssss.gouv.qc.ca**

JOIN THE ASSOCIATION MEMBERSHIP APPLICATION

NAME: _____

ADDRESS OF CORRESPONDENCE

CITY: _____

PROV: _____ POS. CODE _____

TEL(H): _____ TEL(W): _____

e-mail: _____

PLACE OF WORK: _____

POSITION: _____ SINCE _____

EDUCATION:

CEGEP 19____ TO 19____

CONCENTRATION _____

UNIVERSITY (SPECIFY) _____

MEMBERSHIP CATEGORIES

- FULL: \$45.00 CHEQUE
- OR \$1.73/PAYROLL DEDUCTIONS (Batshaw only)
- STUDENT \$30.00 (two year rate)
- ASSOCIATE \$40.00 CHEQUE
- ORGANIZATION \$250.00

(Receipts are issued annually for tax deductions)
(payroll deductions are on T4 slips)

AUTHORIZATION FOR PAY DEDUCTIONS (WHERE APPLICABLE)

I hereby authorize the payroll to deduct the indicated amount from my paycheque. I realize that I will have to cancel this agreement when I want to cancel my membership in the association.

SIGNATURE

Forward to :

Quebec Association of Educators
6 Weredale Park
Montreal (Westmount), Quebec
H3Z 1Y6